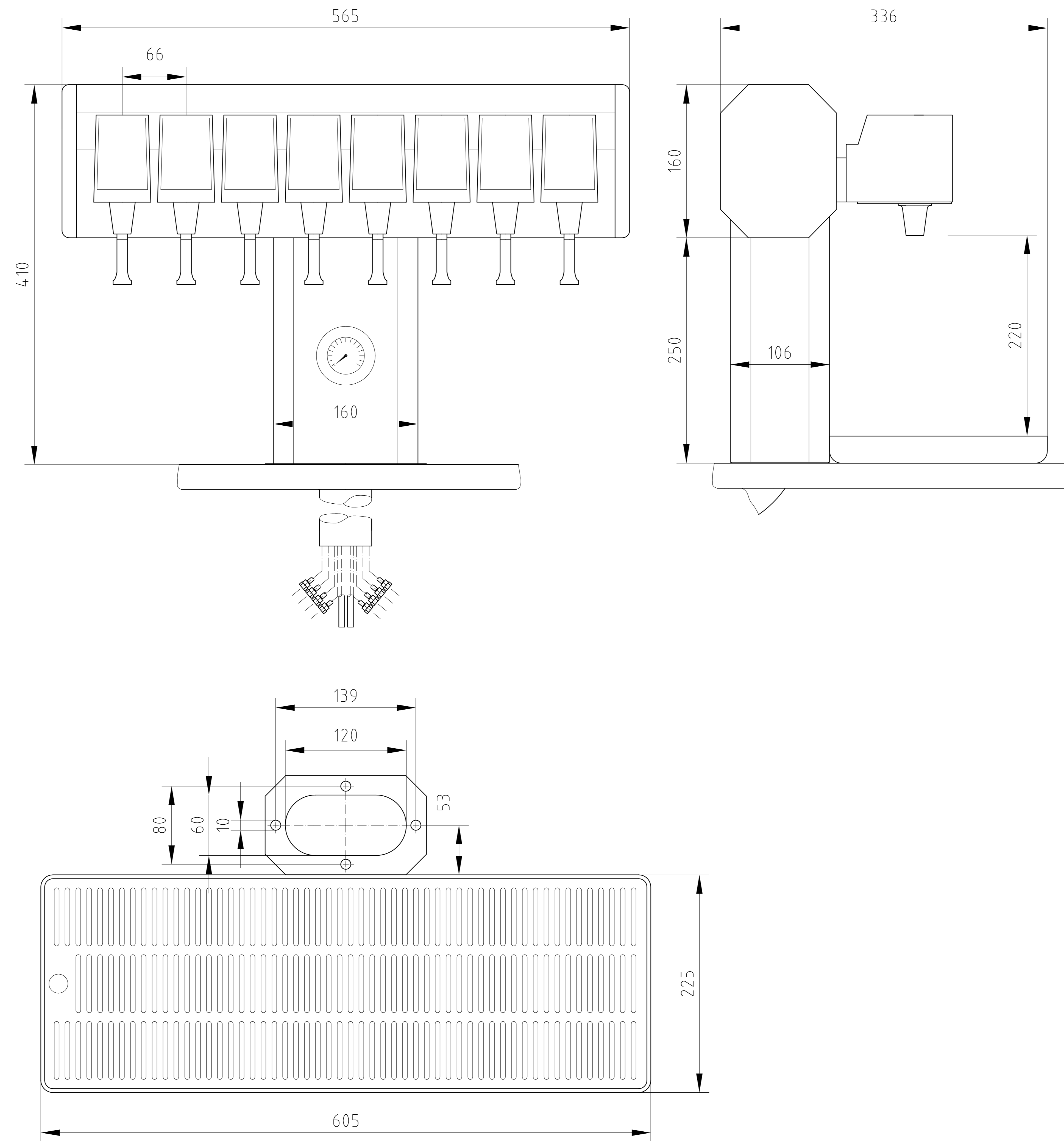


# Aruba



10.04.00 14-3532-134

### Technische Daten

|                       |                                 |                |
|-----------------------|---------------------------------|----------------|
| Aruba Tower Postmix   | AFG                             |                |
| Ausführung            | 8xPOM                           |                |
| Anzahl der Hähne      | 22-0094-802                     | 22-0094-808    |
| Bestellnummer         |                                 | ohne Manometer |
| Python                | ohne Python                     |                |
| Schlauchbelegung      | 1x4mm CO2                       |                |
| Manometer             |                                 |                |
| Elektrischer Anschluß | 24V / 50 Hz                     |                |
| Aufnahmeleistung      | 100 Watt                        |                |
| Transformator         | 13-6869-040                     |                |
| Versandgewicht        | 12kg                            |                |
| Tropfschale           | mit Tropfschale P/N 14-9854-601 |                |
| Besonderheiten        | mit Manometer 0-10 bar          |                |

### Technical Datas

|                     |                                |                        |
|---------------------|--------------------------------|------------------------|
| Aruba Tower Postmix | AFG                            |                        |
| Type                | 8xPOM                          |                        |
| Number of valves    | 22-0094-802                    | 22-0094-808            |
| Partnumber          |                                | without Pressure gauge |
| Python              | without Python                 |                        |
| Tubing used         | 1x4mm CO2                      |                        |
| Pressure gauge      |                                |                        |
| Electrical supply   | 24V / 50 Hz                    |                        |
| Power consumption   | 100 Watt                       |                        |
| Transformer         | 13-6869-040                    |                        |
| Shipping weight     | 12kg                           |                        |
| Drip tray           | with drip tray P/N 14-9854-601 |                        |
| Special items       | with Pressure gauge 0-10 bar   |                        |